



Engine	Cummins QSB4.5
Rated Power	90 kW (121 hp / 122 ps) @ 2,200 rpm
Net Power	84.3 kW (113 hp / 115 ps) @ 2,200 rpm
Maximum Digging Depth	5,870 mm (19'3")
Standard Bucket Capacity	0.6 m ³ (0.78 yd ³)
Operating Weight	15,900 kg (35,053 lbs)

917E DM EXCAVATOR

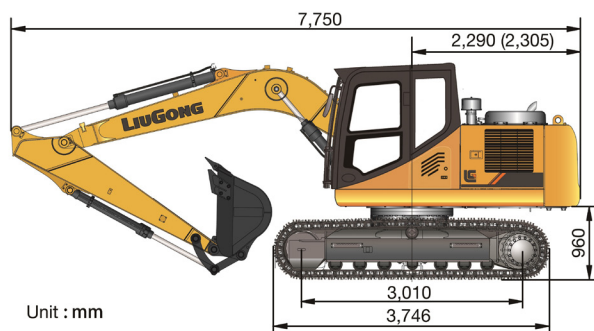
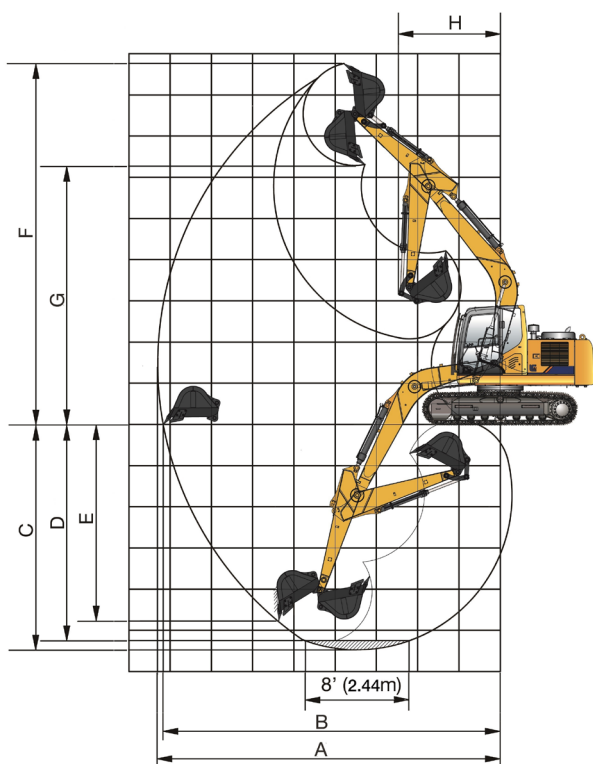
917E_{DM} SPECIFICATIONS >>>

ENGINE

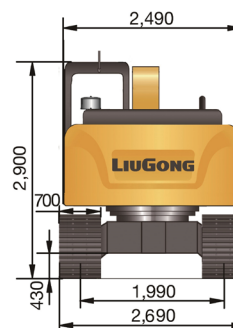
Emission Regulation	Tier 4F / Stage IV
Manufacturer	Cummins
Model	QSB4.5
Rated Power	90 kW (121 hp / 122 ps) @ 2,200 rpm
Net Power	84.3 kW (113 hp / 115 ps) @ 2,200 rpm
Peak Torque	470 N·m (347 lbf·ft) @ 1,500 rpm
Number of Cylinders	4
Displacement	4.5 L (1.2 gal)

UNDERCARRIAGE

Shoe Width	700 mm (2'3")
Number of Shoes per Side	46
Number of Bottom Rollers per Side	7
Number of Upper Rollers per Side	1



Unit : mm



BOOM & ARM

Boom Length	4,600 mm (15'1")
Arm Length	2,900 mm (9'6")

BUCKET PERFORMANCE

Std. Bucket Heaped Capacity (Referenced)	0.6 m ³ (0.78 yd ³)
Min. Heaped Capacity of Bucket Options	0.36 m ³ (0.47 yd ³)
Max. Heaped Capacity of Bucket Options	0.6 m ³ (0.78 yd ³)

TRACK DRIVE

Maximum Travel Speed	5.4 km/h (3.4 mph)
Drawbar Pull	124 kN (27,876 lbf)

SERVICE CAPACITIES

Fuel Tank	245 L (64.7 gal)
Engine Oil	14 L (3.7 gal)
Cooling System	22 L (5.8 gal)
Hydraulic Reservoir	160 L (42.3 gal)
Hydraulic System Total	240 L (63.4 gal)
DEF Tank	17 L (4.5 gal)

HYDRAULIC SYSTEM

Main Pumps Total Flow	2×120 L/min (63.4 gal/min)
Relief Pressure, main	34.3 MPa (4,975 psi)
Relief Pressure, boost	37 MPa (5,366 psi)

SWING SYSTEM

Swing Speed	12.94 rpm
-------------	-----------

WORKING RANGE

A. Max. Digging Reach	8,720 mm (28'7")
B. Max. Digging Reach on Ground	8,620 mm (28'3")
C. Max. Digging Depth	5,870 mm (19'3")
D. Max. Digging Depth, 2.44 m (8') level	5,670 mm (18')
E. Max. Vertical Wall Digging Depth	5,160 mm (16'11")
F. Max. Cutting Height	9,040 mm (29'8")
G. Max. Dumping Height	6,590 mm (21'7")
H. Min. Front Swing Radius	2,545 mm (8'4")
Bucket Digging Force (ISO)	96.9 kN (21,784 lbf)
Arm Digging Force (ISO)	70 kN (15,737 lbf)

Guangxi Liugong Machinery Co., Ltd.

No. 1 Liutai Road, Liuzhou, Guangxi 545007, PR China
T: +86 772 3886124 E: overseas@liugong.com
www.liugong.com

01/2021 Designed by LiuGong

Specifications and designs are subject to change without notice. Machines shown may include optional equipment. LiuGong standard and optional equipment may vary from region to region. Please consult your LiuGong dealer for information specific to your area. Engine power kW is converted to horsepower (1 kW=1.3596 ps and 1 kW=1.3410 hp) in this file.